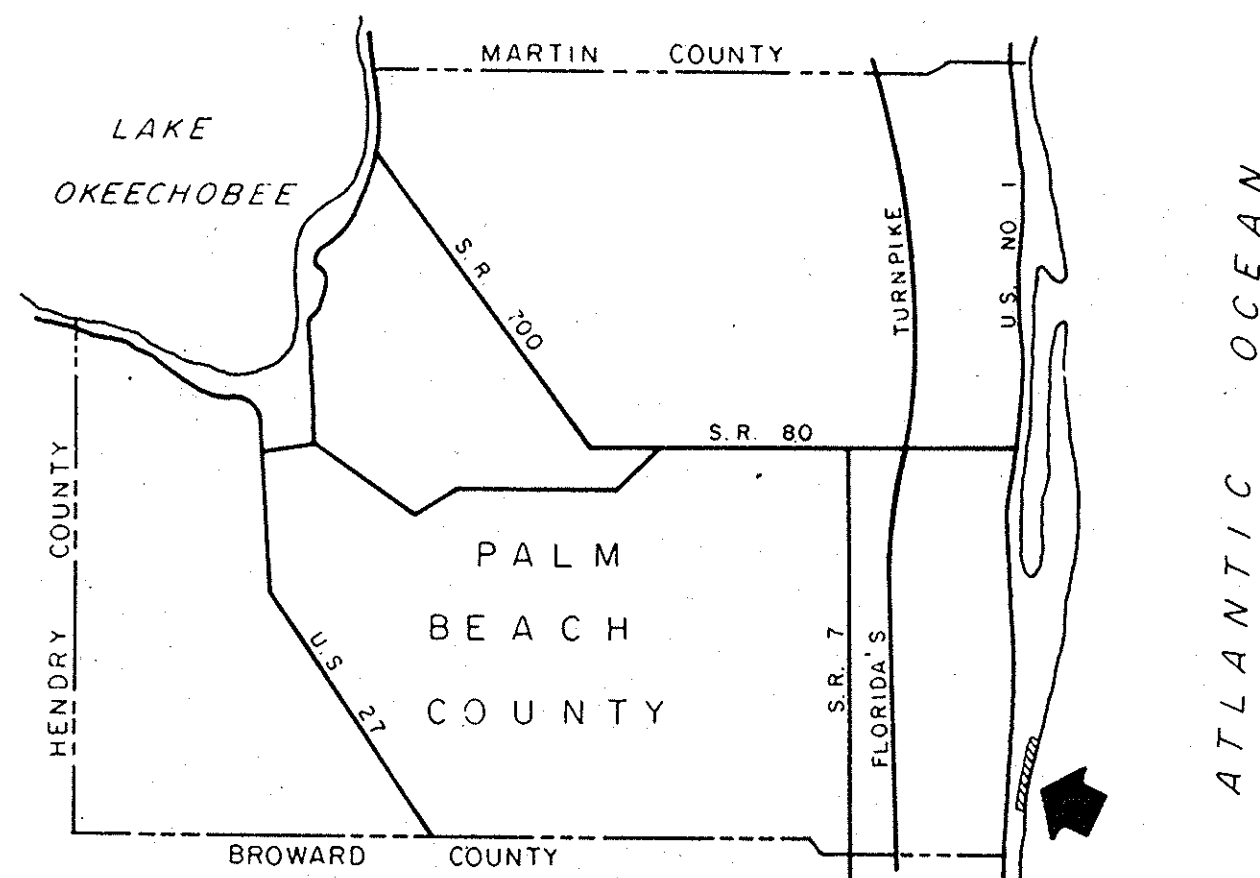
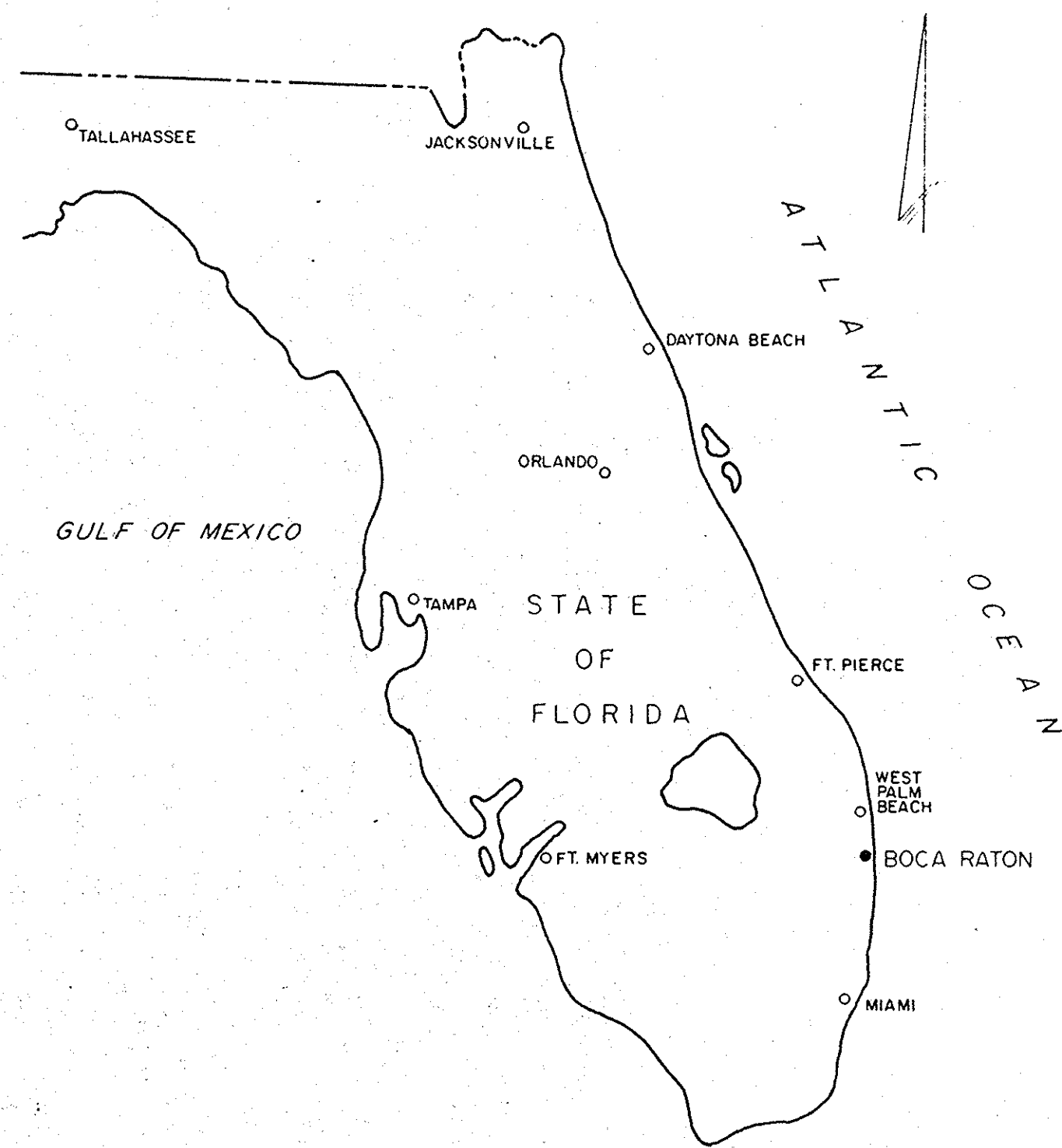


STATE OF FLORIDA  
 COUNTY OF PALM BEACH  
 CITY OF BOCA RATON

# EROSION CONTROL LINE

800± FEET SOUTH OF THE NORTH CITY LIMIT OF THE CITY OF BOCA RATON  
 (DNR BEACH MONUMENT T-205) SOUTHWARD TO A POINT 9500± FEET  
 SOUTH OF THE NORTH CITY LIMIT OF THE CITY OF BOCA RATON (DNR  
 BEACH MONUMENT T-213)

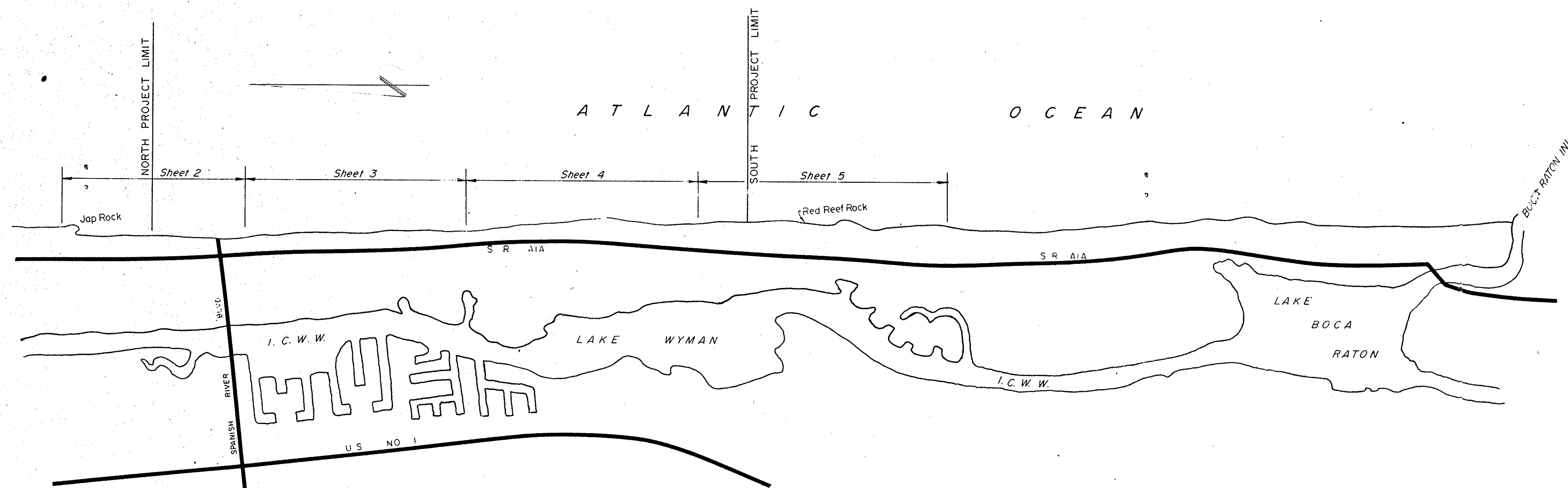


**LEGEND**

- MEAN HIGH WATER SURVEY POINT
- ▲ U.S. COAST AND GEODETIC SURVEY MONUMENT
- DNR MONUMENT LOCATION
- EROSION CONTROL LINE
- SURVEY TIE LINE

**NOTES**

1. COORDINATES AND BEARINGS SHOWN HEREON REFER TO FLORIDA STATE PLANE COORDINATE SYSTEM, EAST ZONE.
2. THIS PLAT WAS PREPARED IN ACCORDANCE WITH CHAPTER 161 OF THE FLORIDA STATUTES.
3. THE EROSION CONTROL LINE AND THE MEAN HIGH WATER LINE ARE ONE AND THE SAME LINE.



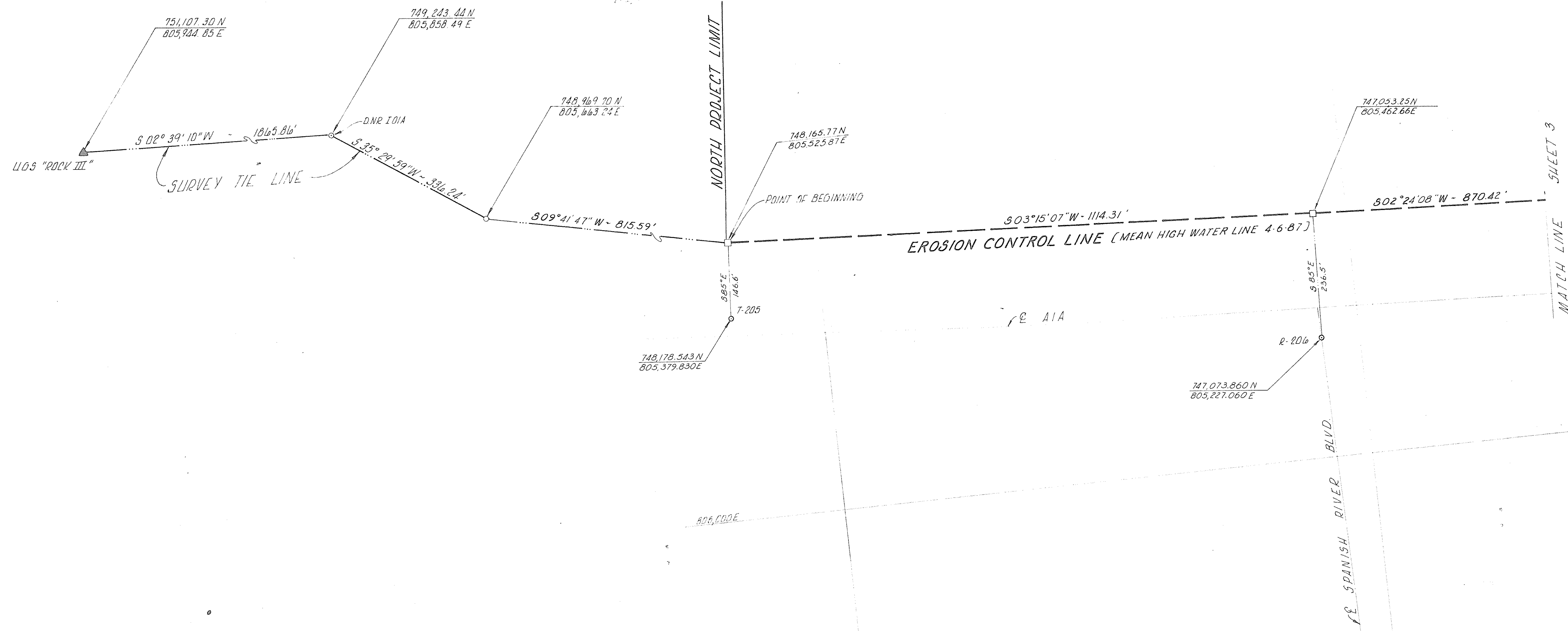
**COASTAL PLANNING & ENGINEERING, INC.**  
 3200 N. FEDERAL HWY. — SUITE 123 — BOCA RATON, FL 33432

PROJECT: EROSION CONTROL LINE  
 DNR BEACH MONUMENT T-205 TO T-213, BOCA RATON

DRAWING NUMBER:	DATE:
DRAWN BY:	APRIL, 1987
CHECKED BY:	FB
SHEET:	PP.
1 OF 5	
COMM. NO.	
695212	

SCALE 1" = 100'

A T L A N T I C O C E A N



COASTAL PLANNING & ENGINEERING, INC.  
 3200 N. FEDERAL HWY. — SUITE 123 — BOCA RATON, FL 33432

PROJECT: EROSION CONTROL LINE  
 DNR BEACH MONUMENT T-205 TO T-213, BOCA RATON  
 MHW 5'75

DRAWING NUMBER:  
 DATE: APRIL 1987  
 DRAWN BY: MK/JW  
 CHECKED BY: RJS  
 SHEET: 2 OF 5  
 COMM. NO. 695212

806,000E

744,000N

745,000N

744,000N

A T L A N T I C O C E A N

SCALE 1" = 100'

MATCH LINE SHEET 2

MATCH LINE SHEET 4

302°24'08"W = 870.42'

746,202.020N  
805,215.580E

T-207

885°E 211.4'

746,183.60N  
805,426.18E

EROSION CONTROL LINE (MEAN HIGH WATER LINE 4-6-87)  
501°35'46"W = 1410.16'

885°E 194.3'

P-208

744,773.99N  
805,386.90E

744,790.920N  
805,193.340E

803°03'41"W = 1175.85'

743,610.717N  
805,199.480E

P-209

743,599.81N  
805,324.10E

885°E  
125.1'

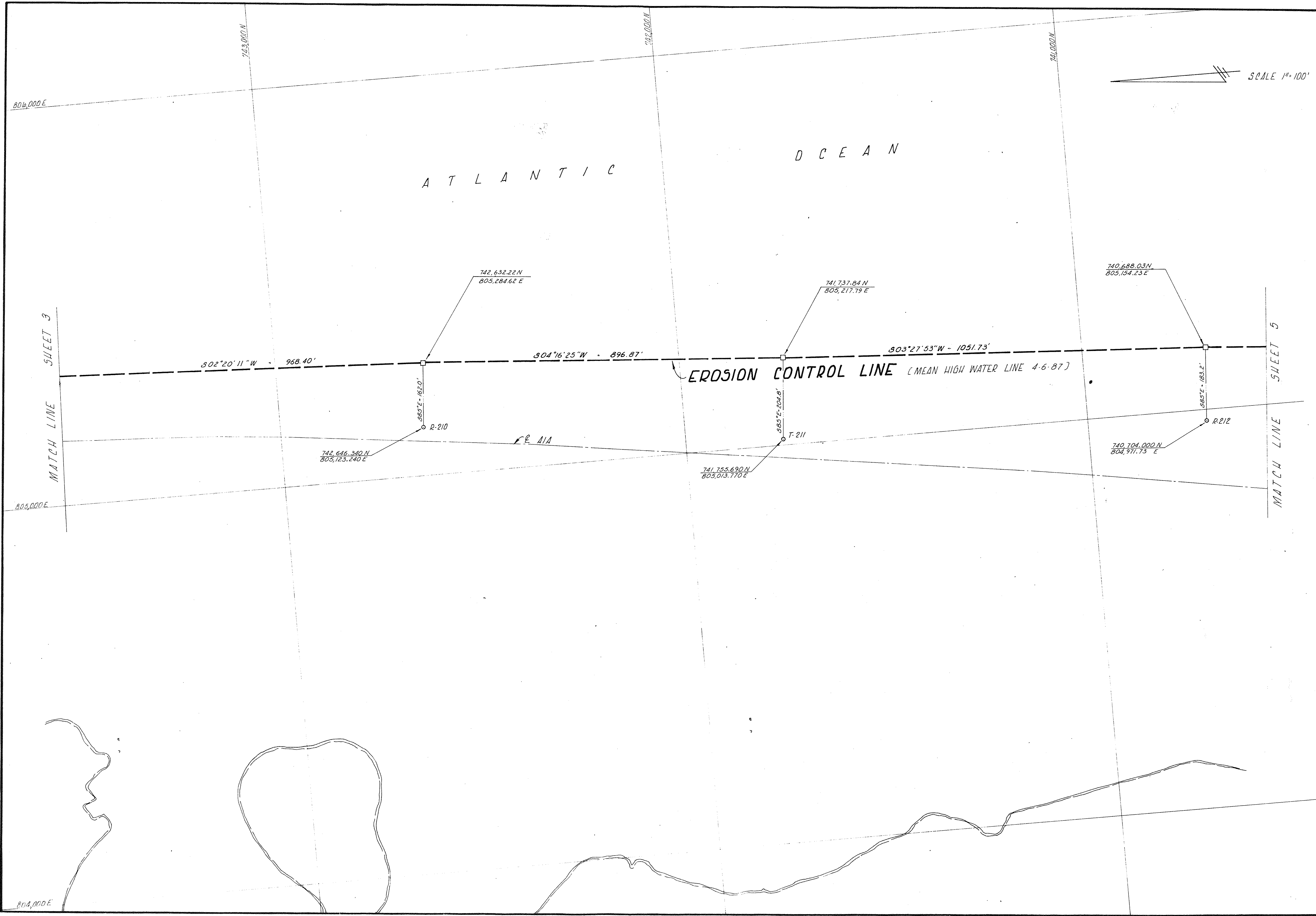
805,000E

PROJECT: EROSION CONTROL LINE  
DNR BEACH MONUMENT T-205 TO T-203, BOCA RATON  
MAN 575

DRAWING NUMBER: [ ]  
DATE: APRIL 1987  
FR. 107, PP. 19-32

DRAWN BY: MK/LFN  
CHECKED BY: [ ]  
SHEET: 3 OF 5  
COMM. NO. 895212

COASTAL PLANNING & ENGINEERING, INC.  
3200 N. FEDERAL HWY. — SUITE 123 — BOCA RATON, FL 33432



SCALE 1"=100'

A T L A N T I C O C E A N

EROSION CONTROL LINE (MEAN HIGH WATER LINE 4-6-87)

MATCH LINE SHEET 3

MATCH LINE SHEET 5

PROJECT: **EROSION CONTROL LINE**  
 DND BEACH MONUMENT T-205 TO T-213, BOCA RATON  
**MHW 525**

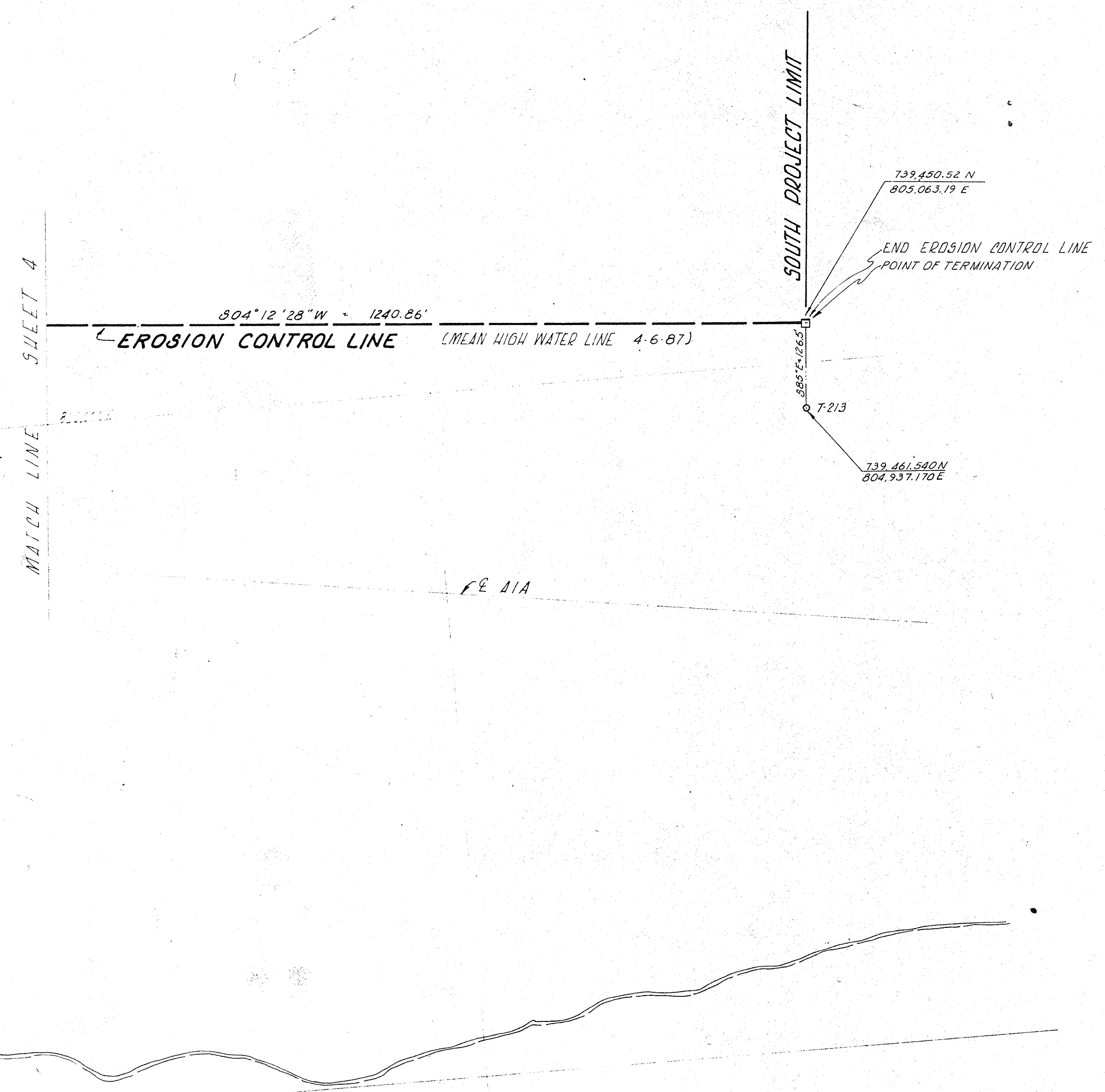
DRAWING NUMBER:	DATE:
APRIL, 1987	APRIL, 1987
DRAWN BY:	CHECKED BY:
M.K. LYN	R.S.
SHEET:	COMM. NO.
4 of 5	495212

COASTAL PLANNING & ENGINEERING, INC.  
 3200 N. FEDERAL HWY. — SUITE 123 — BOCA RATON, FL 33432



A T L A N T I C O C E A N

SCALE 1"=100'



NORTH BOCA RATON  
EROSION CONTROL LINE

A LINE IN SECTION 9, 16, 21, 28 AND 29, TOWNSHIP 47 SOUTH, RANGE 43 EAST, PALM BEACH COUNTY, FLORIDA, MORE PARTICULARLY DESCRIBED AS FOLLOWS:

COMMENCING AT THE UNITED STATES COAST AND GEODETIC TRIANGULATION STATION "ROCK III", HAVING FOR ITS COORDINATES X = 805944.85 AND Y = 751107.30 IN THE FLORIDA STATE PLANE COORDINATE SYSTEM, EAST ZONE; THENCE RUN ALONG A GRID BEARING OF S02°39'10"W 1865.86 FEET TO A MONUMENT STAMPED DNR 101A; THENCE RUN S35°29'59"W 336.24 FEET TO A POINT; THENCE RUN S09°41'47"W 815.59 FEET TO THE POINT OF BEGINNING AND THE NORTH TERMINUS OF THE EROSION CONTROL LINE;

THENCE RUN S03°15'07"W 1114.31 FEET TO A POINT;  
 THENCE RUN S02°24'08"W 870.42 FEET TO A POINT;  
 THENCE RUN S01°35'46"W 1410.16 FEET TO A POINT;  
 THENCE RUN S03°03'41"W 1175.85 FEET TO A POINT;  
 THENCE RUN S02°20'11"W 968.40 FEET TO A POINT;  
 THENCE RUN S04°16'25"W 896.87 FEET TO A POINT;  
 THENCE RUN S03°27'53"W 1051.73 FEET TO A POINT;  
 THENCE RUN S04°12'28"W 1240.86 FEET TO A POINT OF TERMINATION WHICH IS THE SOUTHERN TERMINUS OF THE EROSION CONTROL LINE.

APPROVAL - DEPARTMENT OF NATURAL RESOURCES  
STATE OF FLORIDA

KNOW ALL MEN BY THESE PRESENTS: THAT THE EXECUTIVE DIRECTOR OF THE DEPARTMENT OF NATURAL RESOURCES OF THE STATE OF FLORIDA HEREBY APPROVES THIS PLAT.

DATED AT Tallahassee, Florida THIS 14th DAY OF August 1987

*Don E. Audler*  
ASSISTANT EXECUTIVE DIRECTOR

CERTIFICATE:

I HEREBY CERTIFY THAT THIS SKETCH OF SURVEY OF THE HEREON DESCRIBED PROPERTY IS A TRUE AND CORRECT REPRESENTATION OF A SURVEY MADE UNDER MY DIRECTION AND THAT SAID SURVEY IS ACCURATE AND CORRECT TO THE BEST OF MY KNOWLEDGE AND BELIEF, AND UNLESS OTHERWISE SHOWN, THERE ARE NO VISIBLE ENCROACHMENTS. I FURTHER CERTIFY THAT THE SURVEY REPRESENTED HEREON MEETS THE MINIMUM TECHNICAL STANDARDS FOR LAND SURVEYING IN THE STATE OF FLORIDA, ESTABLISHED PURSUANT TO CHAPTER 21 HH-6, FLORIDA ADMINISTRATIVE CODE.

*William R. Chase*  
WILLIAM R. CHASE  
PROFESSIONAL LAND SURVEYOR  
FLORIDA REGISTRATION NO. 4051  
350 CAMINO GARDENS BLVD.  
BOCA RATON, FLORIDA 33425  
DATE: JUNE 8, 1987

THIS SURVEY IS NOT VALID UNLESS SEALED WITH AN EMBOSSED SURVEYORS SEAL.

COASTAL PLANNING & ENGINEERING, INC.  
3200 N. FEDERAL HWY. — SUITE 123 — BOCA RATON, FL 33432

PROJECT: EROSION CONTROL LINE  
DNR BEACH MONUMENT T-205 TO T-213, BOCA RATON

DRAWING NUMBER: 495212  
DATE: APRIL 87  
SHEET: 5 OF 5  
COMM. NO. 495212